

Decision time for Greater Norwich

Local campaigning organisations CPRE Norfolk, Stop Norwich Urbanisation and NNTAG, with the support of over 3,000 local people, joined forces in November to call for the Joint Core Strategy for the Greater Norwich area to be declared 'unsound' at its Examination-in-Public (EiP).

Ambitions to swell Norwich to the size of Nottingham in the next 15 years by building 32,000 houses for 100,000 extra people in the area, were set before a Government Inspector to decide whether they were 'sound' or not. CPRE Norfolk spoke at the public hearing to challenge the proposals, along with local communities and other environmental organisations.

The plan risks failing on numerous counts:

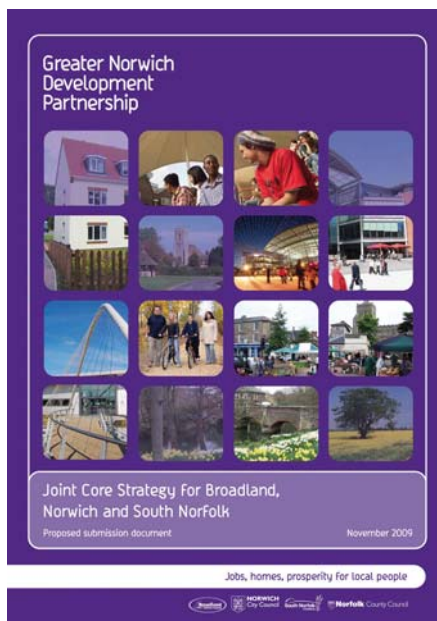
- Significant impacts on the rural character of the county
- The plan is not wanted - over 3,000 local people have signed petitions
- No guaranteed funding for the NDR yet the Strategy is dependent on it
- The strategy is based on economic boom - housing numbers cannot be delivered
- Lack of adequate public consultation
- The councils have already decided to review the plan in December - a sign that they know it's unrealistic

After the hearing, David Hook, from CPRE Norfolk's Planning Team, said "The current population of the Norwich urban area (an area that not only includes the city of Norwich but also its adjoining suburbs such as Thorpe) is 200,000. The Joint Core Strategy proposes a 50% increase to 300,000 people, mostly from inward migration, bringing Norwich to the size of Nottingham and well on the way to becoming a huge conurbation like Bristol.

"All of the things CPRE campaigns for would be impacted - light pollution would increase, rural tranquillity would be reduced and the area of green belt around Norwich would suffer major losses. Add to this the extra traffic, extra strains on waste disposal and the need for more mineral extraction sites and you can easily see why CPRE cannot support the Joint Core Strategy as it currently stands."

CPRE Norfolk want to see a significant reduction in housing numbers, in line with current build rates and market conditions. We want to see a fresh look at the capacity for homes on previously developed land in the city centre. Small urban extensions to the city and market towns may then be acceptable, designed well, with a close fit to proposed employment areas. We also believe that carbon reduction, public transport and affordable housing should be central parts of the whole strategy, rather than it all hinging on new road schemes.

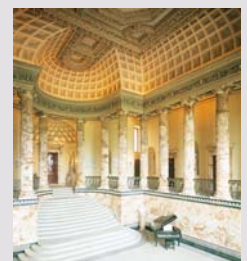
The plans are being put forward by a Greater Norwich Development Partnership (GNDP) of local District Councils, the County Council and the Broads Authority. The verdict is expected in January.



'Sound or Unsound?' the Joint Core Strategy for Greater Norwich

Also in this issue...

- P4 - Green Building Open Days - Over 600 visitors defy autumn rain
- P6 - Roadside Clutter - Is there a solution?
- P9 - Dr Simon Thurley, Chief Executive of English Heritage. His views on heritage and the countryside
- P12 - Schubert and Splendour - February fundraiser at Holkham Hall (pictured)



Norfolk Voice



Who we are

CPRE Norfolk is the Norfolk Branch of the Campaign to Protect Rural England. Our aim is to promote the beauty, tranquillity and diversity of rural Norfolk by encouraging the sustainable use of land and other natural resources in town and country. Set up in 1933, we are one of the longest-running environmental charities in the county. We have 1,500 members and supporters, made up of individuals, families, parish councils, local businesses and other conservation groups.

Support us

We are supported and funded solely by people who care about the Norfolk countryside. We depend on membership, donations and legacies to run our campaigns. If you would like to make a donation, become a member or would like further information about remembering CPRE Norfolk in your Will, please contact Katy Jones, Membership and Events Manager. Your generosity will help us protect the Norfolk countryside for future generations.

CPRE Norfolk is a registered charity, no. 210706 and is registered for Gift Aid.

Work with us

CPRE Norfolk is a voluntary organisation, with almost all our activities carried out by volunteers and supporters. Opportunities to get involved range from litter picking, event management, research, graphics design, trusteeships and planning. Current opportunities and placements are posted regularly on our website and if you would like to discuss them further, please contact James Frost, Director.

Win with us

All CPRE Norfolk members are eligible to enter the 100 Club, a fundraising venture that works on the basis of a lottery. For £12 annually, members can choose a number and enter into two prize draws in June and December. The lottery is fully licensed and prizes range from £20 to £50. To buy a number or for further details contact Dinah Berry, Finance and Administration Officer.

Contact us

CPRE Norfolk
86 St. Benedict's Street, Norwich, NR2 4AB.
Tel: 01603 761660
info@cprenorfolk.org.uk
www.cprenorfolk.org.uk

The beautiful gardens and arboretum of Clermont House, which were opened to the public in October, raising over £200 for CPRE Norfolk. With thanks to CPRE Honorary Treasurer John Davies and his wife Diana for their generosity in hosting the event. If you are willing to open your garden to raise money for CPRE Norfolk, please contact the branch office

Planning Help

Every year, through its network of local committees and planning caseworkers, CPRE Norfolk responds to hundreds of planning applications and gives informal planning guidance to individuals and local councils across the county. Although we are not able to personally follow up every case, we are always ready to hear about local planning and countryside issues, which inform our wider work. Contact our office to be put in touch with someone in your area.

CPRE also has an excellent Planning Help website for advice on all aspects of the planning system - www.cpre.org.uk/planninghelp

Website - www.cprenorfolk.org.uk

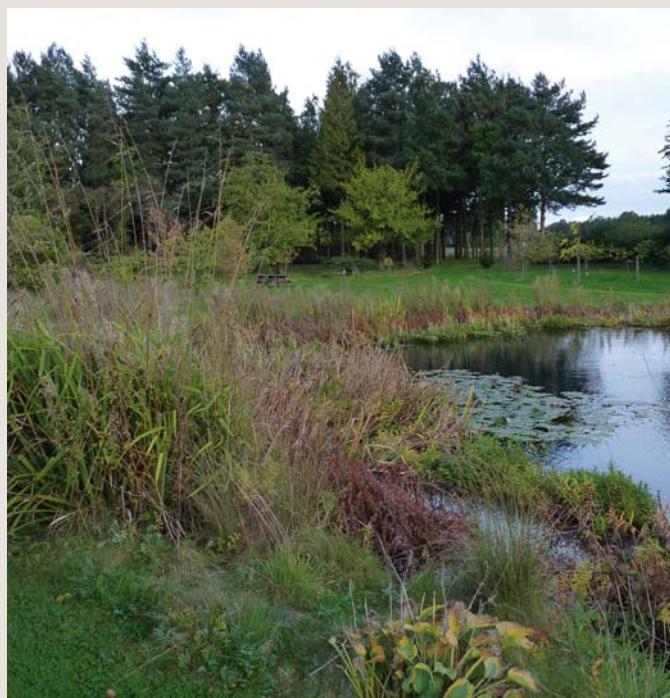
The CPRE Norfolk website has sections on all aspects of our campaigning work. You will find details of Norfolk's greenest buildings; information on CPRE Norfolk Award-winning projects from around the county; copies of our latest planning responses; back issues of this newsletter; and biographies of the people running the charity. Log on to the site at www.cprenorfolk.org.uk and find out more about events near you, current volunteering opportunities, our history, and more...

Norfolk Voice

Please note that opinions expressed in Norfolk Voice are those of individual contributors or of the Editor and do not necessarily represent the views of CPRE Norfolk. The distribution of Norfolk Voice is sponsored by MARSH. Norfolk Voice is designed by Roger Askham and is printed by Crowes on recycled paper.

Pass it on.

Please pass on this copy of Norfolk Voice to a friend or colleague, or take it to your local doctors, dentists or library, to help spread the word about CPRE..



Chairman's view

How much growth does Norfolk need - or want?

In what's been something of a rollercoaster ride to a still unknown destination, the months immediately after I formally became CPRE Norfolk Chairman in April have seen some dramatic changes. A new government was followed swiftly by the abolition of the regional planning structure and its replacement with... well, we don't quite know yet. However, the scrapping of regionally imposed housing targets has certainly been a welcome step. CPRE consistently opposed these



inflated figures and challenged the arithmetic behind them. Their removal has presented local authorities with the opportunity to revise the targets downwards to a more realistic and sustainable level, although so far this seems a challenge they are reluctant to step up to. One Norfolk local authority at least has said it will stick with the original regionally imposed targets for its district, a curious decision given the current economic situation and stagnant housing sector.

The insidious pressure to roll out housing estates and so-called light industrial units across tracts of countryside is one of the reasons I first became interested in the work of CPRE. I had seen what attritional development had done to areas of Hertfordshire near where I grew up and become increasingly frustrated with the universal presumption in favour of ever more economic expansion and greater prosperity as ends in their own right. It's a mantra that few politicians seem able to break away from. Yet surely at some point we need to ask ourselves this question: how wealthy do we need to become before we decide to stop developing, building, expanding? Perhaps the current economic predicament provides a suitable opportunity to pause and reflect on where we actually want to go, rather than be led by politicians and developers.

Meanwhile we are being encouraged by the government to take part in the 'Big Society' and 'Big Conversation'. Whatever one's feelings

about the nomenclature – I rather like 'Small', thank you very much – there's no denying that with our network of volunteers and long tradition of local engagement, CPRE is well placed to play an important role in both.

Furthermore, with the harsh reality of cuts about to bite – Norfolk County Council alone is facing a £155 million funding shortfall – we are likely to see more pressures building. Of particular concern is the creeping corporate colonisation of public assets such as Thetford Forest, a

valued recreational and conservation amenity that may, in part, at least, be on the government's "For Sale" list.

Earlier this month we held our highly successful Norfolk Awards ceremony, the 31st year of what has become a landmark scheme and emulated by other CPRE branches across the country (see pages 10 and 11). Listening to the judges talking about this year's projects, it was telling how many of the award-winning schemes were either part-funded by Norfolk CC or at least facilitated by council officers. This time next year there's the real possibility that such funds won't exist and the officers may be out of a job. It's hard to see how volunteer groups such as CPRE will be able to pick up the slack, but we will be doing our best to play a meaningful and constructive role wherever we can. These are sobering times indeed, but we're up for the challenge.

A handwritten signature in black ink that reads "James Parry". The signature is fluid and cursive, with a long, sweeping tail on the letter 'y'.

James Parry

Chairman jamesp@cprenorfolk.org.uk

James Parry

James Parry, who lives in Breckland, took over from previous chairman Greg Peck at the CPRE Norfolk AGM in April. He joined CPRE Norfolk's Executive Committee in 2005 and has held the role of Vice-chair and also Chair of the Planning Committee. His varied career has embraced conservation, architecture and landscape, both in the UK and abroad. He was instrumental in setting up the Breckland Society in 2003 after he moved to

Norfolk, to recognise the unique character and countryside of the Brecks area and to respond to the threats that Breckland faces. In addition, as a professional writer on wildlife, heritage and art, James' communication skills will undoubtedly be an asset to the charity. James intends to use his time as chairman to develop the charity's resources, and to promote CPRE Norfolk's work to younger audiences.

Green Buildings in Norfolk - Open Days 2010

This year's Green Buildings Open Days started on the first day of autumn but mists and mellow fruitfulness were sadly absent, to be replaced with gales and torrential downpours. Despite the inclement weather almost 900 tours took place at 12 properties and projects across the county, raising almost £1,400 for CPRE Norfolk.

The tours collectively demonstrated a range of environmentally friendly technologies and energy-saving design features. Technologies on show ranged from photovoltaic panels to ground and air source heat pumps, while simpler measures included sheep's wool insulation, clay paints and aesthetically sympathetic double glazing for historic sash windows.

Particularly popular this year were demonstrations of what could be done with 'ordinary homes' such as Horseshoe Cottage in Corpusty. As well as PV panels, solar heating and rainwater harvesting, the owners of this former pub were also able to discuss the merits of wood pellet boilers – a sustainable alternative to their existing oil-fuelled Rayburn and a technology that has not featured in earlier Open Days.

The relative difficulties of retro-fitting, however, no doubt partly explains why many people desire to build their own eco-home and for these people, much was to be learnt from the experiences of the owners of Station Road,



Chris Dady, owner of Station House in Salhouse demonstrates the insulation board used in his timber framed property

Salhouse, Victory House, Fakenham and Two Oaks in Aldborough. All of these properties were able to incorporate energy efficient measures – including super-high levels of insulation, heat sinks, underfloor heating, ground source heat pumps, photovoltaic panels at the very earliest design stages of their project.

There were some specialist projects taking part in the Open Days this year too. Admittedly not many people plan to install an £800,000 biodigester at their property but Stephen Temple of Cops Green Farm was able to show guests how the biodigester works with

a combined heat and power unit to generate energy from farm waste and crops. As he pointed out, "my father used to grow crops on the farm to power the horses, now we grow crops to power the biodigester". The technology provides enough heat and power for the farmhouse buildings, the drying room and the dairy, with much surplus energy being sold back to the National Grid.

On other tours, community-wide solutions were the focus. In Reepham, visitors learned that a range of low carbon community projects were underway in the town, many funded by a major Government grant. These ranged from a ground source heat pump in the church graveyard, air source heat pumps for a courtyard of social housing, sympathetic double glazing and energy-efficient radiators to the Georgian community building The Bircham Centre, the Reepham Car Club and trials of biofuels to replace heating oil in domestic dwellings.

In Neatishead, the community took the bold move of commissioning a modern environmentally friendly design for their new village hall, replacing a traditional red brick Victorian hall that was no longer fit for purpose. Built of timber frame and locally harvested straw bales, with a ground source heat pump, sedum roof and clay and lime render, the building is a refreshing example of what can be done to improve local facilities in a sustainable way.

The Green Buildings in Norfolk Open Days were supported by the Energy Saving Trust, the Lesley Mary Carter Charitable Trust, Awards For All, RG Carter Construction Ltd and, the John Jarrold Trust.

Simon Waller, explains the mechanics and benefits of the wood pellet boiler at Horseshoe Cottage, Corpusty



Green Buildings in Norfolk - Open Days 2010

Doreen Dean, Trustee of New Victory Hall, explains how the building of the hall was a true community effort with children from the village school getting their hands dirty putting on the clay render. Doreen was speaking at a networking event in September to launch CPRE's new Green Buildings in Norfolk booklet (see below). Property owners, developers, planners, climate change officers were among those attending to hear more about CPRE Norfolk's Renewable Energy campaign from CPRE director James Frost. Also giving a presentation was Ian Findlater, Chairman of the Sustainable Prosperity Group of Shaping Norfolk's Future.



Marvellous Marina



Among those defying the weather at the Open Days was 75 year old psychiatrist Dr Marina Voikhanskaya (pictured), who visited New Victory Hall as part of a 300 mile sponsored cycle ride around East Anglia, to highlight CPRE's campaigning activities.

Her tour, most of which took place in driving rain, also included visits to sites in Sheringham, Breckland and King's Lynn which are under threat of development from, respectively, a new supermarket, a housing development, and an incineration plant. After Norfolk, she went on to visit sites in Suffolk and Cambridgeshire.

Marina was born and raised in St. Petersburg where she graduated from medical school and worked as a psychiatrist. She took up cycling at the age of 44, after leaving Russia to come to Britain as a political refugee. Dr Marina Voikhanskaya, says: "I am hugely grateful to CPRE for giving me a chance to see the most wonderful bits of English countryside. It needs help and protection and is particularly vulnerable at present, which is why I wanted to raise awareness and funds for CPRE". And this she has impressively done, with her cycle ride raising almost £2,000 for the charity.

Green Buildings in Norfolk Volume II

CPRE Norfolk has produced a new publication reflecting the developing nature of green buildings in the county. Funded by Awards for All and part of CPRE Norfolk's Renewable Energy campaign, Green Buildings in Norfolk Volume II showcases 21 environmentally friendly eco-homes, energy efficient developments and low impact community buildings in the county.

Many of the properties featured in the booklet have taken part in our Open Days event, whilst others may be less familiar,

such as the Eco Barns in Cranmer, 3 holiday cottages powered exclusively by on-site renewable energy sources; and 'Greening the Box', an exciting housing association project in Ringland in which a traditional 1930s council house has been retrofitted and refurbished to reduce tenants' energy needs.

The booklet explains in more detail the story behind each of the 21 case studies, with a clear summary of the eco-features in each example, as well as contact details of the owners, architects or developers, should readers seek further information. Copies of the booklet are available free of charge, but donations are always welcome to enable CPRE Norfolk continue its

Renewable Energy Campaign. Please send an A4 SAE with stamps to the value of 96p (1st class) or 81p (2nd class) to cover postage costs.



Roadside Clutter – is there a solution?



In August 2010, the Government's Communities Secretary Eric Pickles and Transport Secretary Philip Hammond wrote to all county council leaders calling on them to reduce the number of signs, railings, bollards and advertising hoardings in the area. CPRE Norfolk have been calling for such measures for many years, dating back to an early campaigning publication 'Norfolk in Peril'. William Macadam, former CPRE Norfolk Executive Committee member and author of Norfolk in Peril, takes a retrospective look at the publication and comments on the Government's latest move.

In January 1997 CPRE Norfolk (then called The Norfolk Society) published a campaign booklet Norfolk in Peril to highlight the amount of street clutter in the local countryside. Issues highlighted in the booklet included the proliferation of road signs (their number, size and design); road furniture; adverse lane widening and straightening, the disappearance of wildlife verges; unsympathetic lighting in the countryside; and unsightly roundabouts and traffic islands.

The preface to the booklet stated; "Changes to the road network such as unsympathetic signage, widening of ancient lanes, use of concrete curbing and ugly and unsympathetic urban

lighting can and is now changing, perhaps in some cases irretrievably, the rural Norfolk landscape. We submit that what may seem expedient or progressive to some today will be as surely regarded as the disfigurement and vandalism of tomorrow...".

After publication, there was overwhelming support for our campaign from the Eastern Daily Press and CPRE nationally, which reprinted part of the booklet in the national CPRE magazine. We had extensive meetings with Norfolk County Council members and officers and the then MP for North Norfolk (David Prior) initiated an adjournment debate in the House of Commons, to which the Minister of the Environment (Glenda Jackson) replied sympathetically, albeit without any firm follow up action.

In truth, no national government in recent years has been willing to address the proliferation of signs now blighting our countryside and towns. This looks like it may well now change for the better. We seem to have gained an ally in the present Coalition government at Westminster who have come out in welcome support for what we had been campaigning for.

The Communities Secretary and Transport Secretary stated on August 26th of this year, in part: "We have written to council

leaders calling on them to reduce the number of signs and other street clutter. The Government believes that in some cases traffic signs and railings are installed by councils in the mistaken belief that they are legally required. However, although some signs are required by law, Government advice is that for signs to be most effective they should be kept to a minimum."

Mr Pickles accused what he called over-zealous councils of wasting taxpayers' money on signs that blight the local environment. The statement went on to point out that where one council had actually removed unnecessary and confusing overuse of signage that it had actually reduced accidents by 47%.

Amen to that. We can only welcome new government policy around this issue and they should be congratulated. This enlightened policy, which CPRE Norfolk has long campaigned for, will do much to protect our countryside and urban environs from the continued vandalism of overuse of road signs. Street clutter just as certainly trashes our landscape, just as much as those who fly-tip their way along our roads. We must now make sure that the local councils and their officers now follow through on this long overdue common sense approach.

New street lighting. A curate's egg?

David Hook, Co-ordinator of our Light Pollution Campaign has been tracking Norfolk County Council's street lighting replacement scheme, liaising with street lighting engineers and PFI contractors. While a scheme at Cawston has been recognised with a CPRE Norfolk Award this year, LED lighting trials have posed problems in terms of light pollution control.

"When it comes to Rural Dark Landscapes (the majority of the county by Norfolk County Council's own classification), it is important that the Council retains its Environmental Lighting Zones Policy commitment to using full cut off, flat glass lamps - mounted horizontally to the ground (not tilted upwards). These fully shielded (preferably white) lights have a minimal impact on surrounding countryside and have been installed successfully in rural locations such as Ditchingham and Cawston. The scheme at Cawston has won a CPRE Norfolk Award.

"However, vigilance is always needed and LED trials at other sites have not satisfied CPRE concerns with respect to lamp design. Street lights are classified in a range from G1 to G6 with the G6 lamps being the most effective at reducing light pollution. The LED lights currently being trialled only have a G2/G3 classification.

"One evening last week I had a look at the LED trial sites at Mill Hill Road, Norwich and The Warren, Horsham St Faiths. The pure white colour of the light is good as it produces no awful orange or pink sky glow and the actual lighting on the ground seemed reasonable. However my overall impression was that the lights were poorly shielded and therefore very bright within the overall landscape".

"I also checked the St Faiths lights out from Spixworth Road - a view across open countryside at a distance of about a mile from the site - and those lights that were not blocked by houses were clearly visible.

"It is not just a question of where the light is directed but what also needs to be considered is the distance over which the lights are visible at night as it is this fact that causes lighting at a particular location to have a suburbanising impact on rural areas often far removed from the lit site. For example the sodium lights of Poringland are visible from places that are many miles away from the light source (e.g. Hempnall Greens) and they therefore introduce an urban feel in to an otherwise totally dark rural landscape.

"Compared with the white lights that the Council have been using elsewhere in the PFI replacement programme, these Stela LED lights are much brighter. Furthermore their wattage is no better

than fluorescent or cosmopolis lights because each head has so many bulbs. LED lighting is cheaper to maintain but it is a pity that the company who designed the Stela lamps paid so little attention to the issue of light pollution. With many authorities now looking towards replacing old lighting stock and at the same time considering how best to limit light pollution one would have thought that a major manufacturer would have at least aimed at a G4 standard in order to maximise potential sales.

"The LED lights I saw seem to be designed to look eye catching in appearance with little regard to shielding. Undoubtedly LED street lighting has a big future and light pollution compliant designs will surely become available - and possibly are already - but CPRE Norfolk would not support the use of the Stela lamp, as currently designed, for more wider use in Norfolk."

David Hook wrote to Martyn Wegg, the County's Street Lighting Engineer, noting the light pollution problems associated with the LED lights at Horsham. Martyn has taken David's comments on the LED lights seriously and has told the contractors that they mustn't be used in Rural Dark Landscapes until a fully shielded version becomes available, which is positive news.

Star Count Week

Star-gazers, whether amateur or experienced, are invited to take part in 'Star Count week' from Monday 31 January to Sunday 6 February 2011. Organised by CPRE alongside the British Astronomical Association's Campaign for Dark Skies (CfDS), this follows on from the successful Star Count in the winter of 2006/7 when almost 2,000 people across the country took part.

Emma Marrington, CPRE's Rural Policy Campaigner explains "The Star Count is very easy for people to do. We are asking

people to count the number of stars they can see within the Orion constellation and then enter the information onto an electronic form on our website. We then plan to use the results to produce a Star Count map of the country, which will illustrate how light pollution levels are affecting people's views of the night sky."

The website www.cpre.org.uk/starcount will be 'live' in early January to record results.

Orion's Belt, one of our most familiar constellations, but how many stars can you see?



Sheringham Store Wars reach bitter conclusion

The long running saga of a proposed Tesco superstore in Sheringham has ended, with the corporate giants finally receiving planning permission for a new store in the coastal town. James Frost, Director of CPRE Norfolk, takes a look at the strange circumstances that surrounded the decision.

Firstly, let's look at the background. Tesco have wanted to set up home in Sheringham since 2003 and have submitted three planning applications over the years, each one slightly different to the last, on the same site. Each time the District Council planning officers have supported the application and each time the locally elected councillors, have rejected it. In November 2007, the development control committee rejected it unanimously, 17 votes against and none in favour. Tesco contested the decision at a Public Inquiry and the independently appointed Government Inspector agreed with the councillors, dismissing Tesco's appeal in September 2008. So you would think that would be that...but not so.

On March 4th 2010, CPRE and many local residents of Sheringham celebrated when North Norfolk District councillors voted 14-7 to refuse planning permission again for a further Tesco application, and instead grant planning permission for a rival local scheme, the Greenhouse Community Project (GCP), incorporating a smaller Waitrose superstore, a food academy, allotments and an emphasis on local food sourcing. With a genuine alternative on the table, funded by a local businessman and voted through by local councillors, you would think that would be that... but not so.

The Head of Planning declared at the end of the meeting that the decisions of the councillors may not be legal as it did not fit with national planning policy.

However, advice from lawyers confirmed that the decision was in principle legal, but that another meeting of the planning committee should be convened where councillors could support their decisions with more comprehensive policy-orientated reasons. It sounded straightforward enough, so you would think that would be that...but not so.

Two things then happened. Firstly, in an unprecedented step, eight councillors were reported to the Standards Board, either by officers or members of the public, including three who had voted against the Tesco application and for the GCP application and two directly elected representatives of Sheringham. Although fiercely contested by those affected, it meant that until the complaint was investigated and decided upon by the Standards Board, the Council's



development control committee could not reconvene to ratify their original decision about the supermarkets.

Secondly, the 21-strong committee was reduced to just 14 members, with the same suspended and most vocal councillors that voted against Tesco and for the Greenhouse Project removed. A new Chairman of the committee was also installed, a member who had previously voted for Tesco at the 4th March meeting.

Then, one day after this change came into force on the 8th July, Tesco submitted an amended planning application for the site, with a small change - a pedestrian link from the proposed store which slightly

improved the quality of the connection with the town centre. Just 17 working days later, Tesco put forward a new application for the site, with a further minor access change. As such, 'in the circumstances', it was decided to bring the amended and new Tesco proposals to the table, along with the unchanged GCP application, for the new, much-reduced, committee to vote on again.

On 14th October, the merits of both supermarket proposals were heard once more with favourable representations for the Greenhouse Community Project from the Town Council, the local high school, local campaign group and residents, and CPRE. When it came to vote, the new committee voted 7-7 split for the proposals, with the vote of the new Chairman of the committee making the tied vote. The Chairman then delivered his second, and casting, vote, in favour of Tesco. And in this case... that really was that.

So it came to pass that the Greenhouse Community Project having been given democratic support by local councillors and a large number of the residents in the town, will not now go ahead. There is no doubt that the Tesco store also has local support from some residents but in our view, looking at the wider picture, the Greenhouse Community Project is a much better policy fit for the new

PPS4 guidance on town centres and would provide Sheringham with a joined up approach to food sourcing, growing and sales, not just a one-stop shop. Although the Councillors reported to the Standards Board in connection to the Sheringham planning applications have been cleared of any wrong doing, their vote was lost.

In 20 years time, any injustice may be forgotten, but not by those who witnessed it.

For more details on CPRE Norfolk's view of the supermarket applications in Sheringham, see www.cprenorfolk.org.uk/planning

West Norfolk news

CPRE Norfolk has given its backing to two projects in West Norfolk which address social and economic issues in the area.

In Common Lane in Brancaster Staithe, an application by Hastoe Housing was submitted for 14 affordable homes, in perpetuity, for local people. Some concerns were expressed that the

James Frost, Director of CPRE Norfolk, said, "The people who are being priced out of the countryside are the people who make up the lifeblood of rural communities. If the people who maintain our rural areas and their services cannot find housing locally, the heart of many communities will be lost. Schemes outside the settlement boundary can provide CPRE

Lynn, a pilot project to explore whether enhancement of urban fringe areas improves the social, economic and environmental quality of the area. The £500,000 project will take place over 2 and a half years and will comprise practical work including improving access to green open spaces, creation of habitats for the enhancement of biodiversity, linking urban areas to the wider open countryside around King's Lynn, and the development of outdoor classrooms for community and school use. DEFRA is using the project as one of its 4 case studies in the country. Project Director Gemma Cousins, is to give a presentation at CPRE West Norfolk's AGM next year.



Brancaster Staithe - Picture: Norfolk - Time to Explore

Significantly less welcome are proposals by Eon and RES Ltd to erect 5 wind turbines in Syderstone and 6 wind turbines in Stanhoe, on sites just 2.5km apart.

proposed development would spoil the view from Barrow Common but CPRE supported the proposal, on the grounds of the urgent need to increase the provision of affordable housing in rural settlements, especially in areas like North Norfolk where there are so many second homes.

with a tricky judgement call, but on balance the need for local affordable housing is usually the strongest factor." The application was approved by King's Lynn and West Norfolk Borough Council unanimously.

Meanwhile, CPRE is also supporting The Gaywood River Valley Project in King's

Eon proposes 5 x 100m high turbines and 1 anemometry mast whilst RES Ltd's plans include 6 x 126.5m turbines, 5 anemometry masts and 1 communications mast. CPRE West Norfolk have objected to both applications on the following grounds: negative effects on the landscape character, negative visual effects on the landscape and negative cumulative landscape and visual effects. King's Lynn & West Norfolk Borough Council will determine the applications in early January 2011.

English Heritage CEO speaks to WN members



"A bust for the economy, a boom for heritage" - that was the message from Dr. Simon Thurley, Chief Executive of English Heritage, who spoke at the CPRE West Norfolk Annual Lunch in November.

The recession has seen a resurgence in holidays at home, with both the National Trust and English Heritage reporting record visitor numbers at heritage sites across the UK. Dr. Thurley said that while the Previous Government justified heritage only for its economic value, the wider public valued heritage for its own sake, and were rediscovering it.

Tracing the history of government policy in relation to heritage, Dr Thurley also praised the achievements of the Heritage

Lottery Fund (HLF) and welcomed the Coalition's indication that the HLF would be given a much needed boost following cuts by the previous Government.

Reforms to the Common Agricultural Policy (CAP) are likely to give more sobering news, with less money available for building conservation work. Dr. Thurley also saw no movement as yet in the VAT disparity in between repairing and restoring buildings (where VAT must be paid) and building new homes from scratch (where VAT is exempt).

Over 90 people attended the Lunch at the Knights Hill Hotel in King's Lynn, with Dr. Thurley given a vote of thanks by CPRE Norfolk Chairman James Parry.

CPRE Norfolk Awards 2010

2010 drew to a close with one of the highlights of the CPRE Norfolk calendar – the CPRE Norfolk Awards ceremony, held in the suitably beautiful and grand Music Room at The Assembly House in Norwich. Almost 200 people joined the celebrations this year, including CPRE's Deputy Chief Executive Helen Turner; the High Sherriff of Norfolk and CPRE Norfolk Patron, Charles Barratt, who gave a very entertaining closing address; and Councillor Tony Tomkinson, Chairman of Norfolk County Council.

Thirty-one years has passed since the very first CPRE Norfolk Awards and since their inception, literally hundreds of projects have been recognised, which collectively have enhanced the beauty, diversity and tranquillity of the Norfolk countryside, in line with our charity's aims. As CPRE Norfolk's chairman James Parry noted in his speech at this year's ceremony, "Few of us can live very far from an award-winning project that has made a change for the better in our environment," and the collection of projects recognised in 2010 will sit proudly with those that have gone before. Ranging from small scale landscape enhancement schemes to multi million pound developments and restorations, they all make a positive contribution to the countryside and market towns of Norfolk.

So why does CPRE Norfolk, a campaigning charity give these annual Awards? James



Hardley Mill, one of the winners of this year's CPRE Norfolk Awards. The restoration of the mill has enabled it to earn the enviable position of being the only mill in the county whose sails turn regularly and at length, thereby creating a restored dynamic in the Norfolk landscape

Parry explains the thinking behind them. "We see ourselves very much as a force for progress and change, not as a backward-looking organisation trying to cling on to some sort of halcyon rural past. Our eyes are firmly on the future. We want to play a leading role in the creation of a living and working countryside that is fit for purpose in the 21st century, and for this we are constantly seeking positive and alternative ways forward. Wherever possible, we help

create and promote examples of good practice that will hopefully serve as an inspiration and incentive for the creation of more of what we want."

The chairman went on to identify what CPRE Norfolk seeks to encourage through the Awards scheme, namely new buildings that are built to sustainable criteria, embodying thoughtful and innovative design and with due recognition of their location and context; historic buildings restored sensitively and, where appropriate, converted to contemporary use; public access to the countryside and the wider heritage extended and enhanced through better interpretation and education; and Norfolk's

rich diversity of landscapes, habitats and wildlife protected and supported through conservation projects that are among the best of their kind anywhere.

Without doubt this year's CPRE Norfolk Award winners collectively meet these aspirations and a glance at the full list of winning projects to the right will confirm the quality and diversity of those recognised.

CPRE Norfolk would like to acknowledge and thank Targetfollow Group Ltd, the National Lottery's Awards for All Scheme; the Martin Laing Foundation; the Fitzmaurice Charitable Trust; and the Rowan Bentall Charity Trust for their support and funding of the Awards.

CPRE Norfolk Awards 2010

Winning projects

Fittingly, in the 31st year of the Awards, 31 projects were recognised across the county this year, in the areas of conservation, restoration, education and new build architecture. Unfortunately space does not allow us to give full details of all the projects, so the handful highlighted are simply representative.

New Public Buildings

- New Victory Hall, Neatishead
- Plowright Medical Centre, Swaffham
- Swanton Novers Village Hall
- Jubilee 3 at Easton College

Restoration Projects

- Ingoldisthorpe Hall, King's Lynn
- St Mary's Church, Fornsett St Mary
- Hardley Mill, near Loddon

Historic Building Refurbishments

- The Ship Resource Centre, Great Yarmouth
- Aspire Young Persons Centre, Great Yarmouth
- Itteringham Mill
- Lynn Museum, King's Lynn
- The Pennoyer Centre, Pulham St Mary

Conservation and Landscape Projects

- Litcham Common Grazing Project
- Pensthorpe Conservation Projects

- Gallow Hill Bronze Age Cemetery, Salthouse
- Howes Meadow, Blofield

Schools Projects

- Thurton Primary School
- Saxlingham Nethergate VC Primary School
- Happisburgh Primary School

Conserving Light and Energy

- Copys Green Farm Anaerobic Digester, Wighton
- Renenergy Headquarters, Blofield Heath
- Street Lighting Project, Cawston

Modern Homes

- 22 The Street, West Raynham
- Victory House, Fakenham
- Lammas, Cley
- GreenGauge Homes, Horstead
- Hunsett Mill

Research and Widening Understanding

- The Tacolneston Project
- The Warrens of Breckland
- Putting Local Wildlife on the Map
- Discovery Quest

A copy of the ceremony brochure, with details of all award winning projects and the people involved, is available at www.cprenorfolk.org.uk/awards. Or please send an A5 SAE to CPRE Norfolk if you would like to receive a printed copy.



Comprising 3,000m² of teaching and ancillary space, Jubilee 3 has achieved a BREEAM Excellent rating for its environmental features



Ingoldisthorpe Hall; The extensive and meticulous restoration of this Grade II listed country house and ancillary buildings, previously identified by English Heritage as a Building at Risk*



Orchid counting at Howes Meadow, a 2.4 acre wet meadow actively managed by volunteers to encourage biodiversity



The dramatic and exciting extension to the cottage at Hunsett Mill.

The CPRE Norfolk judges' opinions are reinforced by the Royal Institute of British Architects' (RIBA) which, just days after the CPRE Norfolk Awards ceremony, awarded Hunsett Mill the prestigious Manser Medal 2010 for the best new house or major extension in the UK

Holkham Hall concert

Schubert in Splendour



Tenor Andrés Hernández-Salazar, who will be performing at Holkham Hall in February

On Sunday, 6th February, from 3.00 pm, guests are invited to attend an exclusive recital in the palatial Marble Hall at Holkham Hall, by kind permission of Viscount and Viscountess Coke. Well-known, Norfolk-based, international tenor, Andrés Hernández-Salazar together with his accomplished pianist, Lucinda Macworth-Young will be performing a selection of pieces by Schubert, Chopin, Vaughan-Williams and Guiliani.

Event organiser, Jenny Jones, encourages people to come, saying "This is a not-to-be-missed fundraising event, taking place in such unique surroundings; relax for an hour or two and have your spirits lifted by beautiful music."

Refreshments will be available on arrival in the formal Saloon, providing an opportunity to meet friends and other guests or simply stand back, enjoy a drink,

and admire the art of Rubens and Van Dyck. Other state rooms will also be open for the afternoon.

Tickets are available in advance and cost £20.00 (£17.50 CPRE members). Funds raised will support the campaigning work and activities of CPRE Norfolk. To secure your tickets, please send an SAE enclosing a cheque made payable to CPRE Norfolk to 33 Church Lane, Eaton, Norwich, NR4 6NW. For further details or enquiries, please contact Mrs Jenny Jones on 01603 250239, or by email justjennyjones@yahoo.co.uk



HOLKHAM

Publications

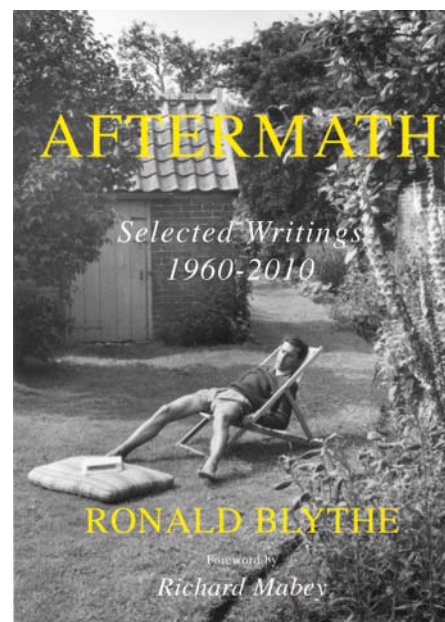
Two books have been recently published which pay homage to the East Anglian countryside, first in literature and then in art.

Aftermath, features the selected writings of author Ronald Blythe from the period 1960-2010, with a foreword by writer and naturalist Richard Mabey. Over the last 50 years, Blythe's gentle, voice has spoken to us of the East Anglian countryside and this compilation includes extracts from his major works, such as Akenfield and Divine Landscapes, The View in Winter, his introductions to Hazlitt and Henry James and volumes of war poetry. Also included, for the first time, are essays and reviews of novels, literary biographies, letters and diaries.

Water Marks - Art in East Anglia, by journalist and art critic Ian Collins is a

comprehensive study of the painters, sculptors, carvers, designers, decorators, photographers, print-makers, illustrators and cartoonists from the 19th century to date who have been moved by the atmosphere of East Anglia. Arranged in the form of a loose travelogue, in a journey meandering from North Norfolk to Norwich, Great Yarmouth, Coastal Suffolk, North Essex, the Brecks, the Fens and then back to the Wash, the book features scores of entertaining stories and hundreds of images.

Both publications can be purchased online from www.blackdogbooks.co.uk or by sending a cheque to Black Dog Books, 104 Trinity Street, Norwich, NR2 2BJ tel 01603 623771 at the special price of £28 for Water Marks and £17.99 for Aftermath, both prices to include P+P.



CPRE Norfolk, 86 St. Benedict's Street, Norwich, NR2 4AB. Telephone 01603 761660